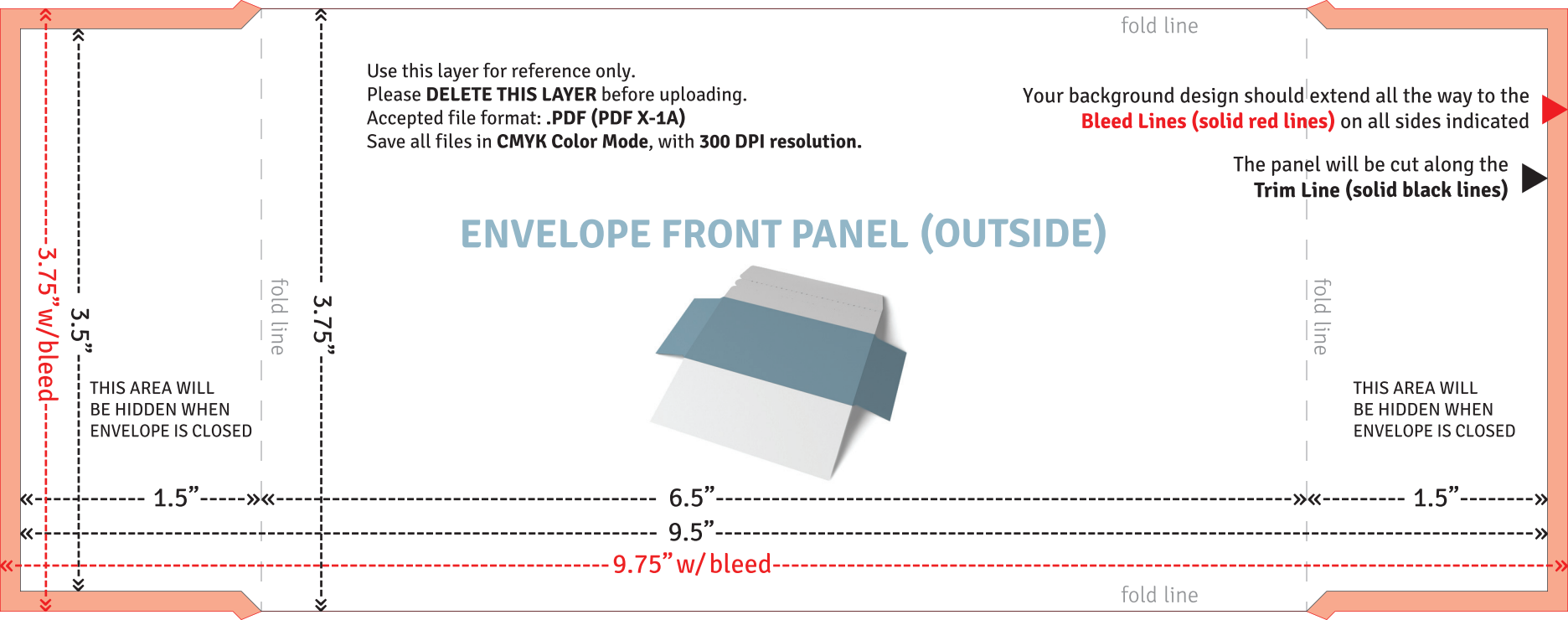
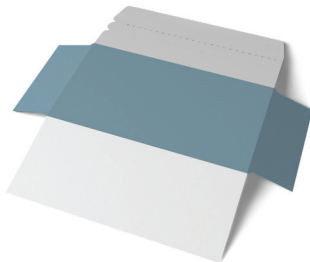


Use this layer for reference only.  
Please **DELETE THIS LAYER** before uploading.  
Accepted file format: **.PDF (PDF X-1A)**  
Save all files in **CMYK Color Mode**, with **300 DPI resolution**.

Your background design should extend all the way to the **Bleed Lines (solid red lines)** on all sides indicated

The panel will be cut along the **Trim Line (solid black lines)**

## ENVELOPE FRONT PANEL (OUTSIDE)



fold line

fold line

fold line

fold line

3.75" w/bleed

3.5"

3.75"

1.5"

6.5"

1.5"

9.5"

9.75" w/bleed

THIS AREA WILL  
BE HIDDEN WHEN  
ENVELOPE IS CLOSED

THIS AREA WILL  
BE HIDDEN WHEN  
ENVELOPE IS CLOSED